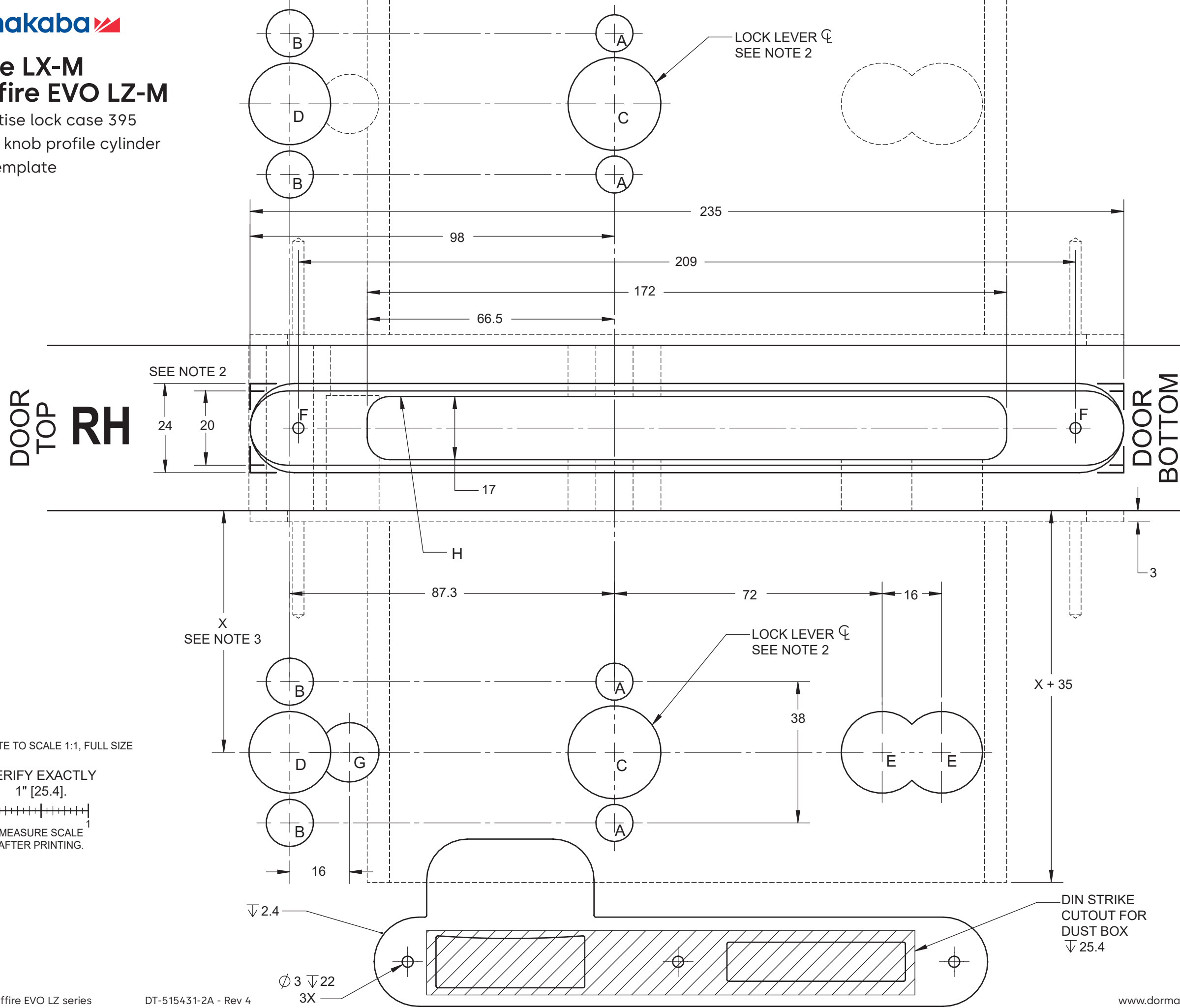


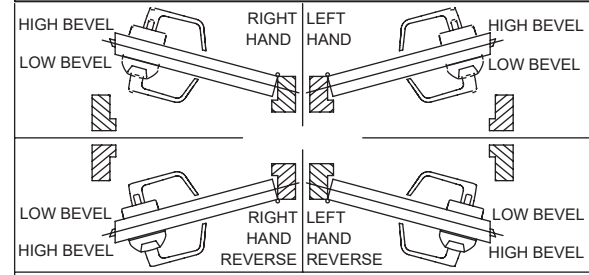
# Saffire LX-M & Saffire EVO LZ-M

Euro mortise lock case 395  
Half Euro knob profile cylinder  
Drilling template

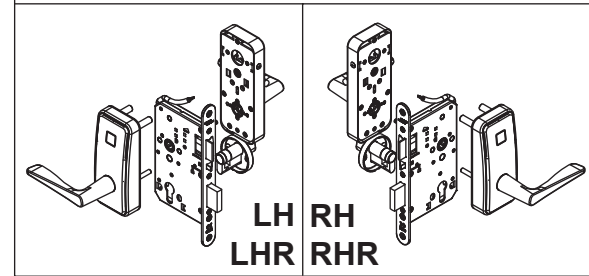


HOLE ID	DIM [mm]	COMMENTS
A	∅ 10	*
B	∅ 12.5	*
C	∅ 25	*
D	∅ 22	*
E	∅ 22	* DRILL TO LOCK CASE POCKET HOLE. ONE SIDE ONLY.
F	∅ 3	∇ 22
G	∅ 16	TO WALL H

\* UNLESS OTHERWISE NOTED, DRILL HALF DOOR THICKNESS ON BOTH SIDES.

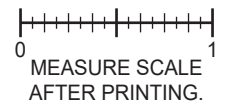


- NOTES:
- FOR DIMENSIONS AND TOLERANCES REFER TO CORRESPONDING DOOR PREPARATION DRAWING IP-516431-2.
  - TO CUT OUT AS PER FOREND DIMENSION (20 OR 24 mm, ROUND OR SQUARE ENDS).
  - BACKSET SHOWN FOR REFERENCE ONLY. ADJUST BACKSET AS PER LOCK CASE.
  - SYMBOLS:
    - ∇ DEEP
    - ⊕ CENTERLINE OF DOOR
    - ∅ DIAMETER
  - ALL DIMENSIONS ARE IN MILLIMETERS [mm].



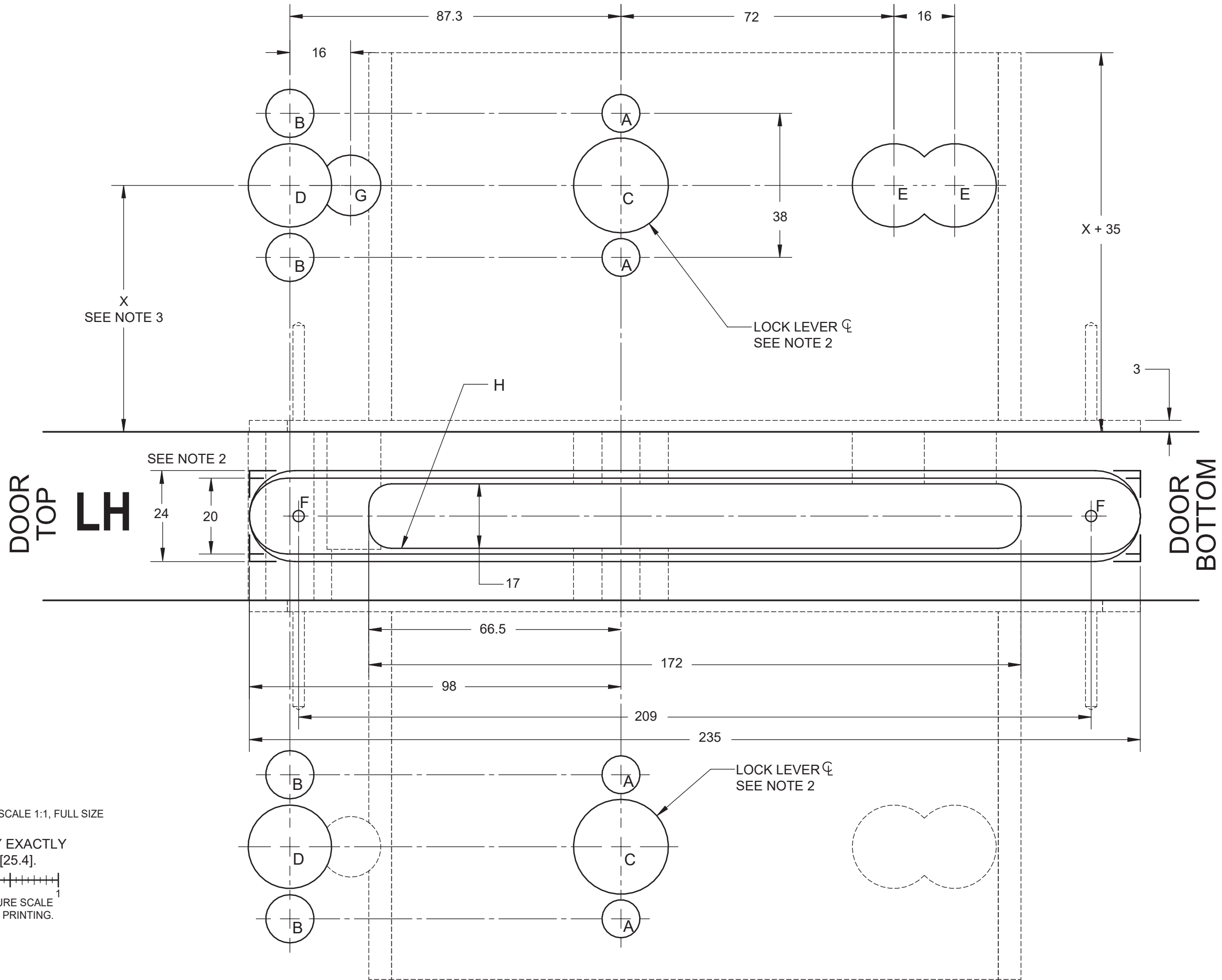
TEMPLATE TO SCALE 1:1, FULL SIZE

VERIFY EXACTLY 1" [25.4].



**WARNING**

- To verify lock coverage and door operation meets expectations, dormakaba strongly recommends completing a full door mockup. This will ensure that all necessary products and parts for a successful installation are included.
- Always validate that you have selected the correct template for specific lock model being installed. The same lock model can be offered with different locking device options.
- Always validate after printing to confirm the dimensions listed on the drawing have printed on a 1:1 scale.
- If you have any questions, please contact your local sales representative or authorized reseller.



TEMPLATE TO SCALE 1:1, FULL SIZE

VERIFY EXACTLY  
1" [25.4].

